



Human Environment and Transport Inspectorate (ILT)

The Human Environment and Transport Inspectorate monitors compliance regarding the safe use of GMOs in laboratories, field trials and gene therapy research. They also inspect GMO imports.



Enforcement

[Read more at ilent.nl](http://ilent.nl) >

The Netherlands Commission on Genetic Modification (COGEM)

This commission advises the Ministry of IenW on the risks to human health and the environment related to the production and use of GMOs. In addition, the COGEM informs the Ministry of IenW about ethical and social issues related to genetic modification.



Advice

[Read more at cogem.net](http://cogem.net) >

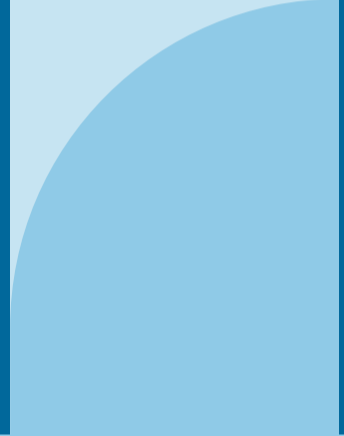
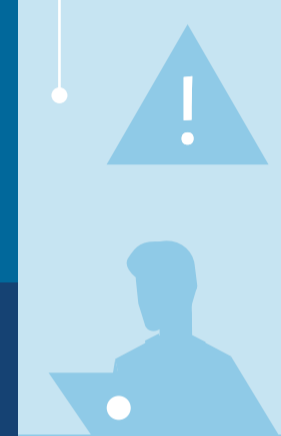
Ministry of Infrastructure and Water Management (IenW)

The Ministry IenW develops policies to ensure activities involving GMOs are safe for humans, animals and the environment.



Policymaking

[Read more at government.nl](http://government.nl) >



The GMO office

The GMO Office grants permits for activities involving GMOs and is the point of contact for all parties involved in working with GMOs.



Implementation



[Read more at ggo-vergunningverlening.nl](http://ggo-vergunningverlening.nl) >



Biological Safety Officer (BSO) Platform

The BSO Platform association offers biological safety officers (BSOs) support in performing their duties in the context of GMO regulation.



Stakeholders

[Read more at bvplatform.nl](http://bvplatform.nl) >

[Read more at biotechnologie.nl](http://biotechnologie.nl) >

